



---

IEWS OF CENTRAL PARK

---

HIGH-END SUITE  
MOVE-IN CONDITION

on the 15th Floor

---

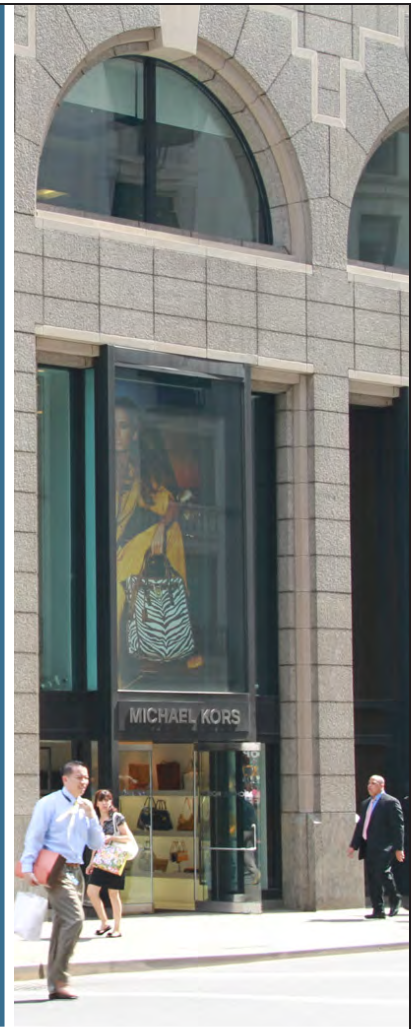
**SUITE AVAILABLE:** 2,500 RSF

**POSSESSION:** Summer 2019

**ELECTRIC:** Pro Rata

**TERM:** 10 years

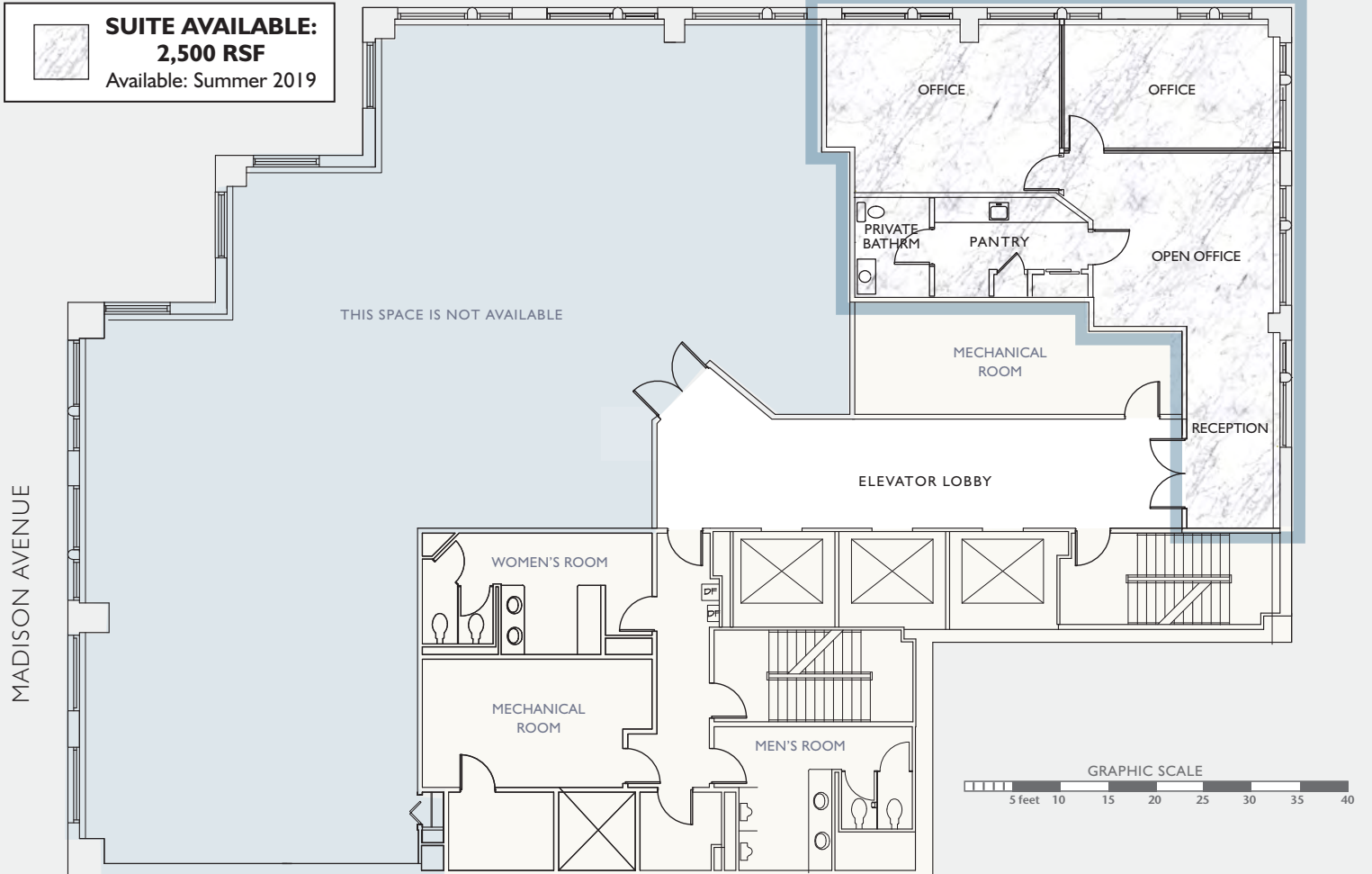
---





HIGH-END SUITE  
MOVE-IN  
CONDITION  
on the 15th Floor

61ST STREET



0519.1

- Expansive windows with views of Central Park
- Automatic shades
- Glass walls with glass doors
- White Carrera marble floors throughout the suite
- Marble elevator foyer
- Pantry with stainless steel, high-end residential appliances
- Private bathroom
- LED ceiling lights
- Cat 6 / ample power
- In-house fitness club
- Golf simulator room

For further information and inspection,  
please contact:

Samia Bali: 212.308.3336 • samia.bali@hartzmountain.com

**The Hartz Group, Inc.**

667 Madison Avenue, New York, New York 10065

212.308.3336 - Phone • 212.838.8845 - Fax • [www.667madison.com](http://www.667madison.com)



**HARTZ**